

# MONTHLY MEMBERSHIP PROGRESS REPORT

LOCATION MISSISSIPPI

District 30 S

Results as of: 5/31/2022

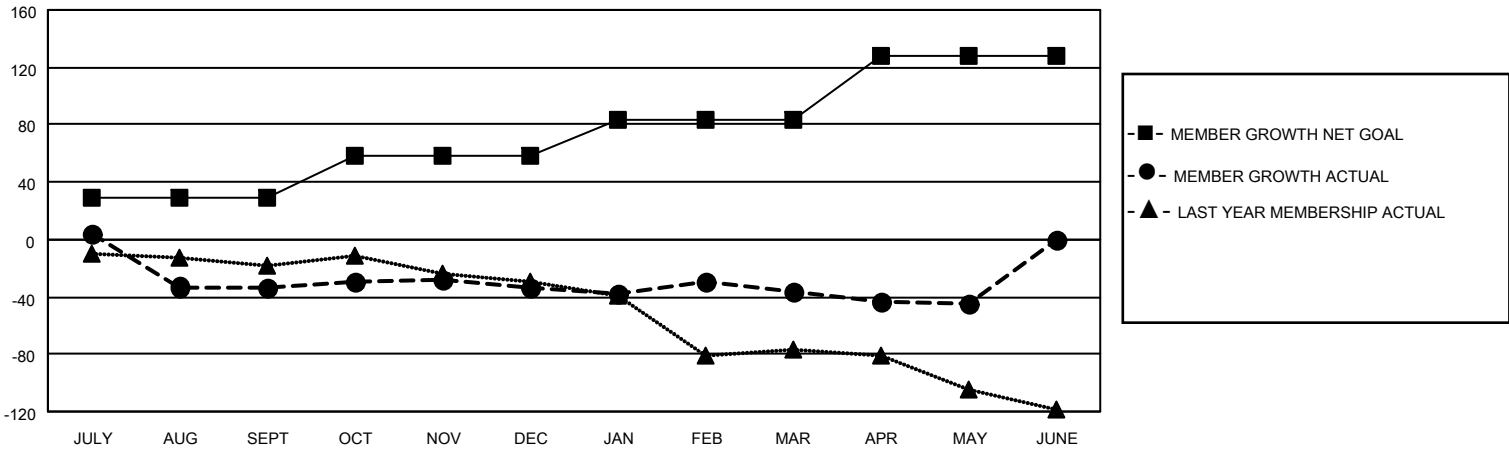
Clubs			
RESULTS FOR 2021-2022			
QUARTER	NEW CLUB GOAL	NEW CLUBS	DROPPED CLUBS
JULY/AUG/SEPT	0	0	3
OCT/NOV/DEC	0	0	0
JAN/FEB/MAR	0	0	0
APR/MAY/JUNE	0	0	0

Members			
RESULTS FOR 2021-2022			
QUARTER	MEMBER GROWTH NET GOAL	MEMBER GROWTH ACTUAL	DROPPED MEMBERS ACTUAL (including transfers)
JULY/AUG/SEPT	29	24	58
OCT/NOV/DEC	29	20	20
JAN/FEB/MAR	26	31	32
APR/MAY/JUNE	44	12	19

**GOALS AND ACTUAL NEW CLUBS CUMULATIVE**



**GOALS AND ACTUAL MEMBERS CUMULATIVE**



**DROPPED CLUBS: 3**

**18 CLUBS OF 43 ADDED 1 OR MORE NEW MEMBERS**

**GENDER DISTRIBUTION**

MALE	565 (69.07%)
FEMALE	253 (30.93%)
NON BINARY	0 (0.00%)
PREFER NOT TO ANSWER	0 (0.00%)

**DROPPED MEMBERS**

DECEASED	16
CLUB CANCELLED	39
OTHER	74
<b>TOTAL</b>	<b>129</b>

[CLICK HERE FOR CUMULATIVE MEMBERSHIP DATA](#)

TOTAL FAMILY UNIT MEMBERS	88
FAMILY MEMBERS PAYING HALF DUES	44